

**Aldine 9: Algebra Homework #21**

www.aldine9math.weebly.com

**Assigned****Due**

A: 10/30 Thurs

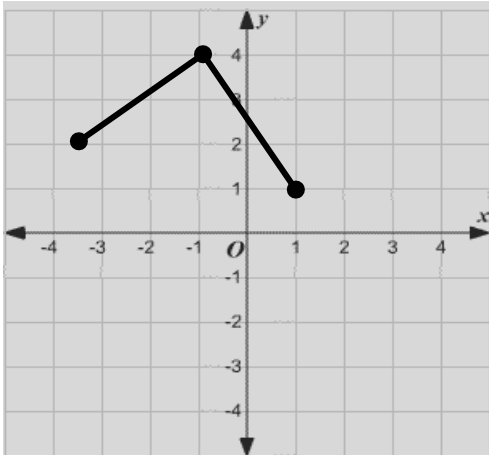
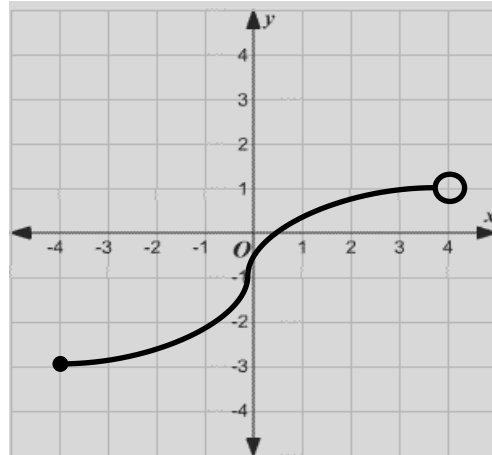
A: 11/3 Mon

Name: \_\_\_\_\_

Period: \_\_\_\_\_

B: 10/31 Fri

B: 11/4 Tues

**1) What is the range of the graph?****2) What is the domain of the graph?**

**3)  $f(x) = 7x + 3$**

$f(7) = \underline{\hspace{2cm}}$

$f(11) = \underline{\hspace{2cm}}$

$f(0) = \underline{\hspace{2cm}}$

**4)  $f(x) = 2x - 6$**

$f(7) = \underline{\hspace{2cm}}$

$f(11) = \underline{\hspace{2cm}}$

$f(0) = \underline{\hspace{2cm}}$

**5)  $f(x) = 3x + 2$**

If  $f(x) = 32$ , then  $x = \underline{\hspace{2cm}}$

If  $f(x) = 11$ , then  $x = \underline{\hspace{2cm}}$

The Student Council is selling holiday wreaths. \$75 was spent on materials to make the wreaths. The wreaths were then sold for a profit of \$15 each. **Let  $x$  = number of wreaths sold.**

**6)** Which function would calculate the total profit?

**F**  $f(x) = 15x + 15$

**G**  $f(x) = 75x - 15$

**H**  $f(x) = 15x + 75$

**J** None of the above

**7)** What is the independent variable in this situation?

**A** The amount spent on materials.**B** The number of wreaths sold.**C** The total amount of profit.**D** The number of students making the wreaths.